

# SOLITEX

High-performance roof and wall underlays



pro clima®

... optimum protection against  
mould and condensation  
in your construction

Weatherproof

Windproof

Durable



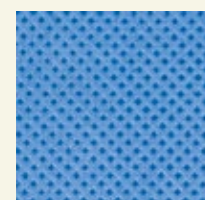
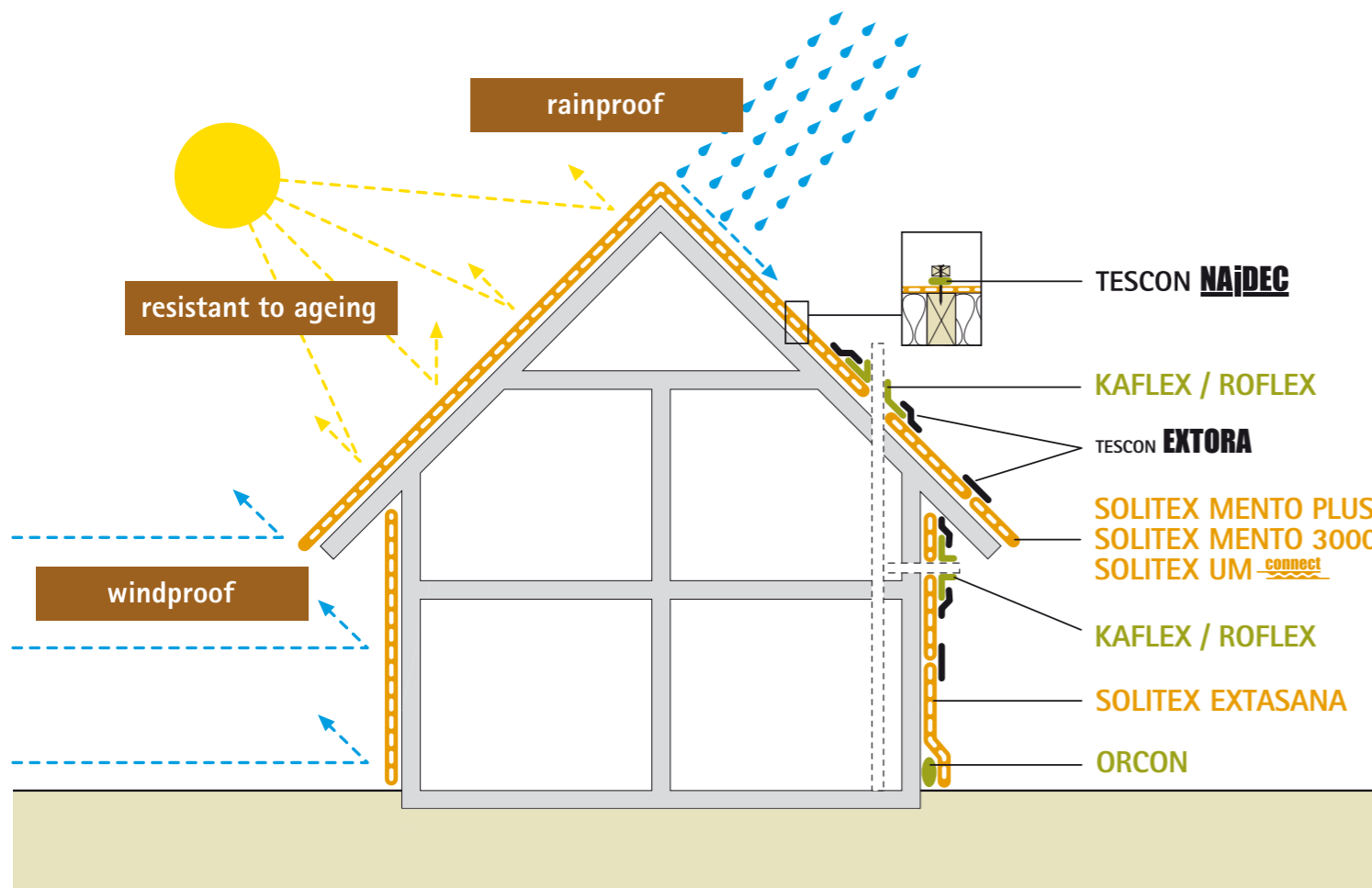
- ✓ For a healthy home
- ✓ For enhanced insulation performance
- ✓ For maximum structural protection
- ✓ For optimum weathertightness

[www.proclima.com.au](http://www.proclima.com.au)



# MATERIALS AND PROPERTIES

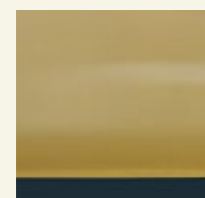
pro clima SOLITEX membranes have an impressive range of basic characteristics: diffusion-permeable, rainproof, highly tear-resistant. Quick and safe to work with.



### Cover fleece

The robust polypropylene microfibre cover fleece is water-resistant and provides optimum protection against water penetration. It protects the specialist TEEE-film underneath from damage and UV radiation.

The honeycomb structure guarantees non-slip properties even when wet. It is coloured blue to prevent dazzling effect when it is installed.



### Specialist TEEE-film

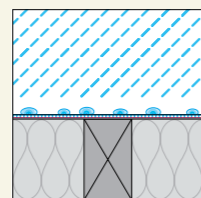
A stretchable, diffusion open specialist TEEE-film gives the pro clima SOLITEX membranes extremely high resistance to water penetration. At the same time, it allows the water vapour from the inside to pass almost unrestricted towards the outside.

In addition, the specific properties of the specialist TEEE-film ensure the excellent wind resistance properties of the pro clima SOLITEX membranes.



### Reinforcement material

The tightly meshed PP reinforcement material, doubles the overall strength of the SOLITEX PLUS membrane. If it is used as a sarking membrane, the material is highly effective at preventing the membrane being penetrated through accidental treading or nail tearing.



### No tent effect

The fact that the pro clima SOLITEX membranes are multi-layered prevents the tent effect (tent canvases leak at points of contact). The pro clima SOLITEX membranes can be supported across the whole surface.

For more detailed technical information please refer to the pro clima New Zealand Study.

# PRO CLIMA WALL WRAP AND ROOF UNDERLAY

pro clima SOLITEX membranes are multi-layered and excellently suited for use as roof underlay and sarking membrane



## SOLITEX EXTASANA Wall protection membrane

**APPLICATION:** SOLITEX EXTASANA is designed to be used behind most typical cladding systems, provided it is not exposed to the weather or ultra-violet light for a period greater than 60 days.

### ADVANTAGES:

High performance monolithic nonporous membrane; high water resistance; low vapour resistance; unaffected by wood preservatives; thermostability above 100°C; can be exposed to the Australian elements for 60 days

### TECHNICAL DATA:

Cover-fleece + protective-layer:	PP microfibre fleeces
Membrane:	monolithic TEEE film
MVTR-value:	< 0.75 MNs/g
Thickness :	0.60 mm
Temperature resistance:	-40°C to +100°C
UV stability and outdoor exposure:	60 days
Water column:	> 10,000
Surface weight	140 g/m <sup>2</sup>



## SOLITEX MENTO PLUS Four layer reinforced roof underlay

**APPLICATION:** SOLITEX MENTO PLUS is designed to be used with most typical roof cladding systems, provided it is not exposed to the weather or ultra-violet light for a period greater than 60 days.

### ADVANTAGES:

High wear-resistance microfibre fleece; very high resistance to driving rain; very high thermal stability; suitable for use as temporary roof covering as recommended by pro clima

### TECHNICAL DATA:

Cover-fleece + protective-layer:	PP microfibre fleeces
Membrane:	monolithic TEEE film
Reinforcement:	PP
Thickness:	0.60 mm
MVTR-value:	< 0.50 MNs/g
Surface weight:	170 g/m <sup>2</sup>
Temperature resistance:	-40°C bis +100°C
Nail tear resistance:	470 N/5 cm / 310 N/5 cm



## SOLITEX MENTO 3000 Three layer roof underlay

**APPLICATION:** SOLITEX MENTO 3000 is designed to be used with most typical roof cladding systems, provided it is not exposed to the weather or ultra-violet light for a period greater than 60 days.

### ADVANTAGES:

High wear-resistance microfibre fleece; very high resistance to driving rain; very high thermal stability; suitable for use as temporary roof covering as recommended by pro clima

### TECHNICAL DATA:

Cover-fleece + protective-layer:	PP microfibre fleeces
Membrane:	monolithic TEEE film
Thickness:	0.60 mm
MVTR-value:	< 0.50 MNs/g
Surface weight:	140 g/m <sup>2</sup>
Temperature resistance:	-40°C bis +100°C
Nail tear resistance:	470 N/5 cm / 310 N/5 cm



## SOLITEX UM connect Four-layer roofing underlay with 3D separation layer and self-adhesive strip

**APPLICATION:** SOLITEX UM connect is suitable for ventilated or unventilated structures in combination with any type of roofing or façade materials such as titanium zinc, aluminium, stainless steel, galvanised steel, copper etc..

### ADVANTAGES:

Optimum safety for the roof; highly diffusion-permeable, but with maximum resistance to driving rain; 3D separation layer provides increased acoustic insulation and ventilation between the derived timber sheathing and the metal roof covering; very high thermal stability; integrated self-adhesive strip

### TECHNICAL DATA:

Cover-fleece + protective-layer:	PP microfibre fleeces
Membrane:	monolithic TEEE film
Thickness:	8 mm
MVTR-value:	0.1 MNs/g humidity variable
Surface weight:	450 g/m <sup>2</sup>
Temperature resistance:	-40°C to +100°C
Nail tear resistance:	270 N/5 cm / 200 N/5 cm

### pro clima system products:



**TESCON EXTORA**  
Weatherproofing tape  
Windproof and weather-tight sealing of wall wraps, roof underlays and other weather-tightness layers.



**ORCON**  
Multi-purpose liquid adhesive  
For connections to rough adjoining structural components or mineral surfaces.



**ROFLEX / KAFLEX**  
Weatherproofing grommets  
Sealing grommets for cables and pipes that penetrate the membrane.



**TESCON NAIDEC**  
Double sided butyl rubber tape  
Weatherproofing nail sealing tape for the underside of a purlin / batten on roofs to form a durable seal around nail or screw penetrations.

# SOLITEX

... the essential element to ensure optimum weathertightness protection for your home under all Australian climate conditions

**For more information please contact us:**

## **PASSIVE HOUSE PTY LTD**

Office & Showroom:  
7-9 Raglan St, North Melbourne VIC 3051

Warehouse:  
Factory 4, Rear 93 Matthews Ave, (enter via Rodd Rd carpark)  
Airport West VIC 3042

Phone: 03 9329 3693  
Web: [www.passivehouse.com.au](http://www.passivehouse.com.au)  
Email: [web@passivehouse.com.au](mailto:web@passivehouse.com.au)

## **PRO CLIMA AUSTRALIA PTY LTD**

Phone: 1800 PRO CLIMA (1800 776 254)  
Email: [welcome@proclima.com.au](mailto:welcome@proclima.com.au)  
Web: [www.proclima.com.au](http://www.proclima.com.au)

In Australia Pro Clima also offers the INTELLO airtightness membrane.

The INTELLO membrane is part of the Intelligent Airtightness System "IAS" that is very innovative and effectively eliminates uncontrolled air leakage and moisture build-up within the construction.

The INTELLO membrane whilst being airtight acts also as a "vapour check" eliminating condensation, damp, mould and rot. The result is structural soundness, enhanced thermal performance, reduced CO<sub>2</sub> emissions and improved indoor air quality. Homes and buildings are healthier, warmer, drier and more energy efficient throughout all seasons and regions in Australia.

